

fresh perspective

NEW LOOKS. NEW IDEAS.

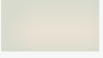
A MIXOLOGIST'S DREAM KITCHEN



wild
truffle



spiced
gingerbread



white
sage

currently cool

**SOME PEOPLE FOLLOW TRENDS.
OTHER PEOPLE SET THEM.**

Become a kitchen mixologist. Mix generous portions of contrasting cabinet colors with various cool counter textures. It's easy to do with a limited neutral palette. The base cabinets are smooth Painted Linen, while the kitchen island blends a dark granite with a lighter silky quartz. The feature wall complements it all with a dash of Maple Cognac. Whether you prefer shaken or stirred, you'll be the coolest mixologist on the block, and your soirées will be the envy of all the neighbors.



Waypoint[®]
LIVING SPACES

fresh perspective

NEW LOOKS. NEW IDEAS.



fresh perspective

NEW LOOKS. NEW IDEAS.



fresh perspective

NEW LOOKS. NEW IDEAS.



NEW LOOKS. NEW IDEAS.



TOP MLDG: FSS396 FLAT
BOT MLDG: FSS396 FLAT
TOE MLDG: BTK8
CH: 102*

LIVING/
ENTERTAINMENT SPACE/
COMBO/DINING RM

GENERAL NOTES:
INSTALL CABINETS AT 96" AFF & STACKED CABINETRY AT 94 3/8" AFF PER PLAN.
PLANE FRAMES AS NECESSARY TO ENSURE TIGHT FIT.
INSTALL HARDWARE USING 1" FLAT-HEAD SCREW ON DOORS.
INSTALL ACCESSORIES/MOLDINGS PER DRAWINGS.
COUNTERSINK NAILS USED IN MLDG INSTALLATION.

All dimensions size designations given are subject to verification on job site and adjustment to fit job conditions.

Waypoint[®]

This is an original design and must not be released or copied unless applicable fee has been paid or job order placed.

Jennifer L. LeMarr, CKD

Designed: 10/07/14
Printed: 10/07/14

Currently Cool Kitchen FINAL.kit

	F
--	---

Drawing #: 1

Scale : $0 \frac{3}{8}'' = 1'$

It is the responsibility of the designer and installer to order the correct doors, hardware and any required moldings and accessories. Waypoint Living Spaces® cannot foresee every design contingency and cannot be held responsible for incorrect door sizes, improper installation or other design or installation problems. Waypoint® provides these drawings as a design suggestion only and disclaims any and all liability. These solutions may or may not be suitable for your application.

Waypoint®
LIVING SPACES

fresh perspective

NEW LOOKS. NEW IDEAS.



fresh perspective

NEW LOOKS. NEW IDEAS.



Note: This drawing is an artistic interpretation of the general appearance of the design. It is not meant to be an exact rendition.

Jennifer L. LeMarr, CKD
Currently Cool Kitchen FINAL.kit

Waypoint
LIVING SPACES

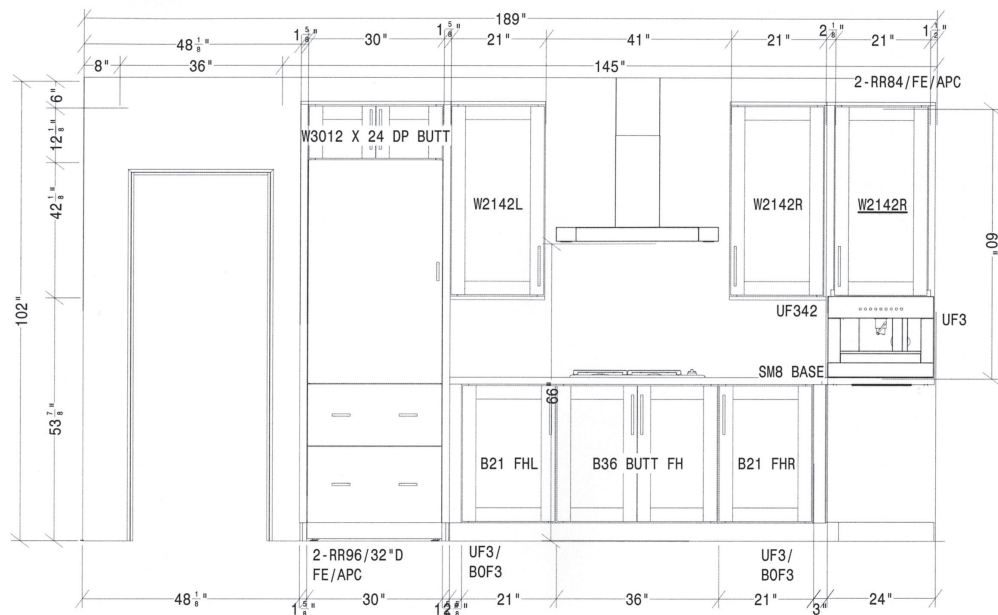
Designed: 10/07/14
Printed: 10/07/14

F

Drawing #: 1

fresh perspective

NEW LOOKS. NEW IDEAS.



INSTALL NOTES:
 TRIM 2-RR9632 TO 25" DEEP.
 PULL & BLOCK W3012x24DP BUTT 1" TO 25" DEEP.
 PLEASE NOTE: COFFEE MAKE SPECS WHEN INSTALLING.
 INSTALL COFFEE MAKER/2-RR84/W2142-ID22" ON SM8 BASE, SQ EGDE OUT.
 FLANK W2142R W/2-RR84 TRIMMED TO 60" HIGH.
 INSTALL BUILT-IN COFFEE MAKER AS SHOWN WITH SM8 FLAT AS A BASE.
 TRIM UF3 AS NECESSARY TO FILL VOID IN CUT OUT.
 CREATE VOIDED BASE CORNER WITH UF3 FILLERS.
 ATTACH OVERLAY FILLERS (BOF) AS NOTED; CENTERED ON FILLER.

All dimensions size designations given are subject to verification on job site and adjustment to fit job conditions.

Waypoint
LIVING SPACES

This is an original design and must not be released or copied unless applicable fee has been paid or job order placed.

Jennifer L. LeMarr, CKD

Designed: 10/07/14
 Printed: 10/07/14

Currently Cool Kitchen FINAL.kit

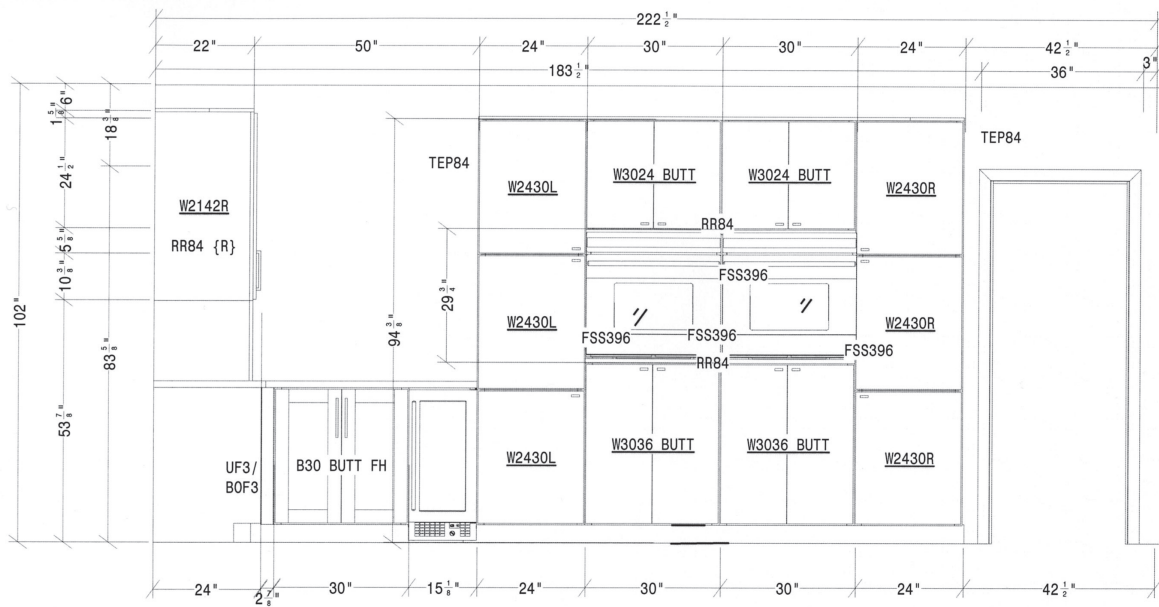
EI 1

Drawing #: 1

Scale : 0 7/16" = 1'

fresh perspective

NEW LOOKS. NEW IDEAS.



INSTALL NOTES:
 CREATE VOIDED BASE CORNER WITH UF3 FILLERS.
 ATTACH OVERLAY FILLERS (BOF) AS NOTED; CENTERED ON FILLER.
 CREATE A 4" H x 20-1/2" D PLATFORM FOR WALL CABINETS INSTALLED ON TOE KICK.
 STACK 30" HIGH WALL CABINETS AS SHOWN.
 PLEASE NOTE: WALL OVEN SPECS WHEN INSTALLING.
 USE 2-RR84 TRIMMED AS NECESSARY TO CREATE FINISHED TOP/BOTTOM FOR WALL OVENS;
 INSTALL W/Front LIP FACING TOP/BOTTOM CABINET.
 USE FSS396 TO CREATE SIDES FOR OVEN CUTOUT AREA AS SHOWN;
 INSTALL FSS396 ON BOTH SIDES OF EACH OVEN, WITH 2-FSS396 VERTICALS IN CENTER.

All dimensions, size designations given are subject to verification on job site and adjustment to fit job conditions.		This is an original design and must not be released or copied unless applicable fee has been paid or job order placed. Jennifer L. LeMarr, CKD	Designed: 10/07/14 Printed: 10/07/14

Currently Cool Kitchen FINAL.kit

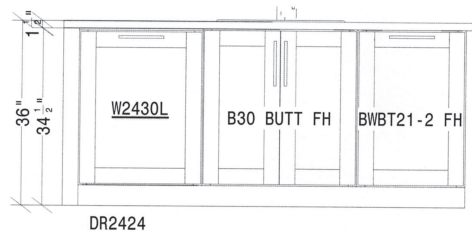
EI 2

Drawing #: 1

Scale : 0 7/16" = 1'

fresh perspective

NEW LOOKS. NEW IDEAS.



DR2424

INSTALL NOTES:
INSTALL DR2424 DECORATOR DOOR ON DISHWASHER.
NOTE: DISHWASHER SPEC WHEN INSTALLING.

All dimensions .size designations given are subject to verification on job site and adjustment to fit job conditions.

Waypoint
LIVING SPACES

This is an original design and must not be released or copied unless applicable fee has been paid or job order placed.

Jennifer L. LeMarr, CKD

Designed: 10/07/14
Printed: 10/07/14

Currently Cool Kitchen FINAL.kit

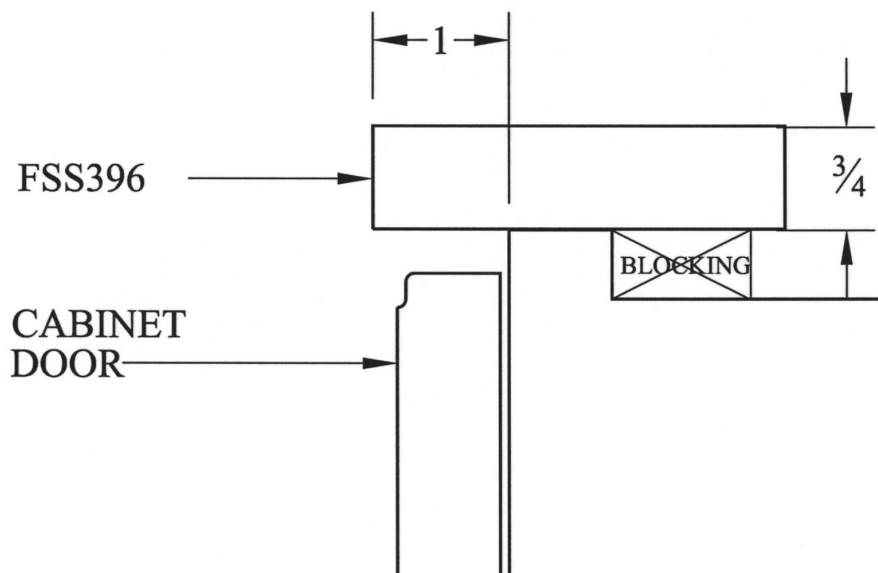
EI 3

Drawing #: 1

Scale : 0 1/2" = 1'

fresh perspective

NEW LOOKS. NEW IDEAS.

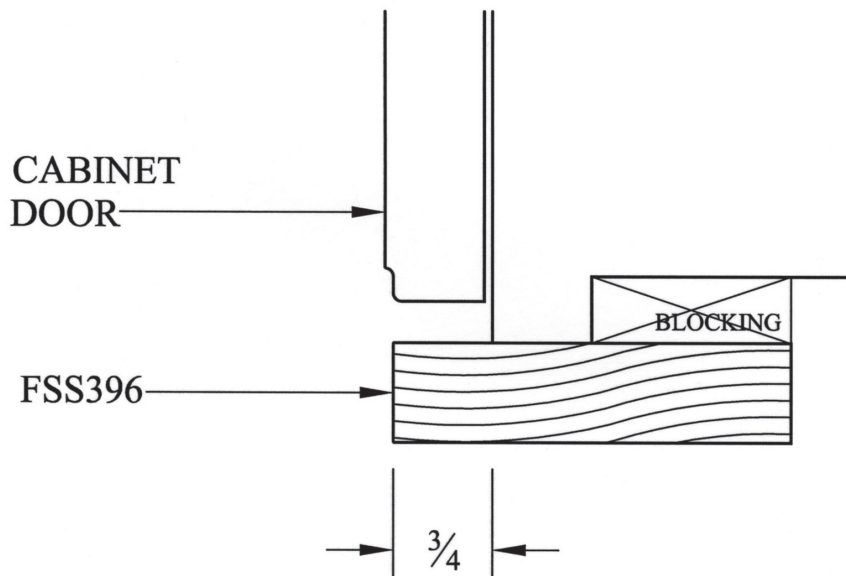


TOP MOLDING

© 2011 American Woodmark Corp

fresh perspective

NEW LOOKS. NEW IDEAS.



BOTTOM MOLDING

© 2011 American Woodmark Corporation